

Poplar Court



Memphis, Tennessee

PROJECT:

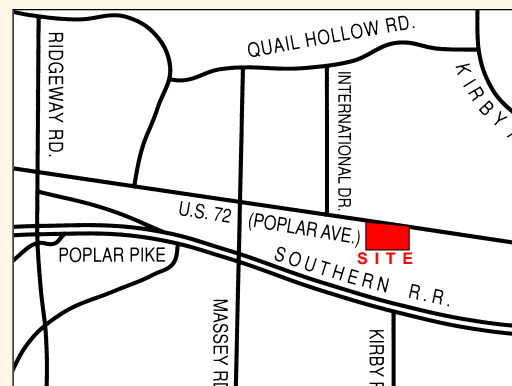
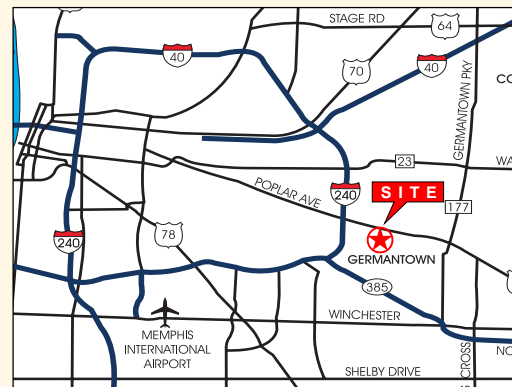
Poplar Court is an exciting retail center located on the thriving "Poplar Corridor". With the excellent combination of office, commercial and residential population, the area surrounding *Poplar Court* is one of the most ideal retail locations in the Memphis market. *Poplar Court* is one of the few retail locations which provide excellent visibility and access to Poplar Avenue.

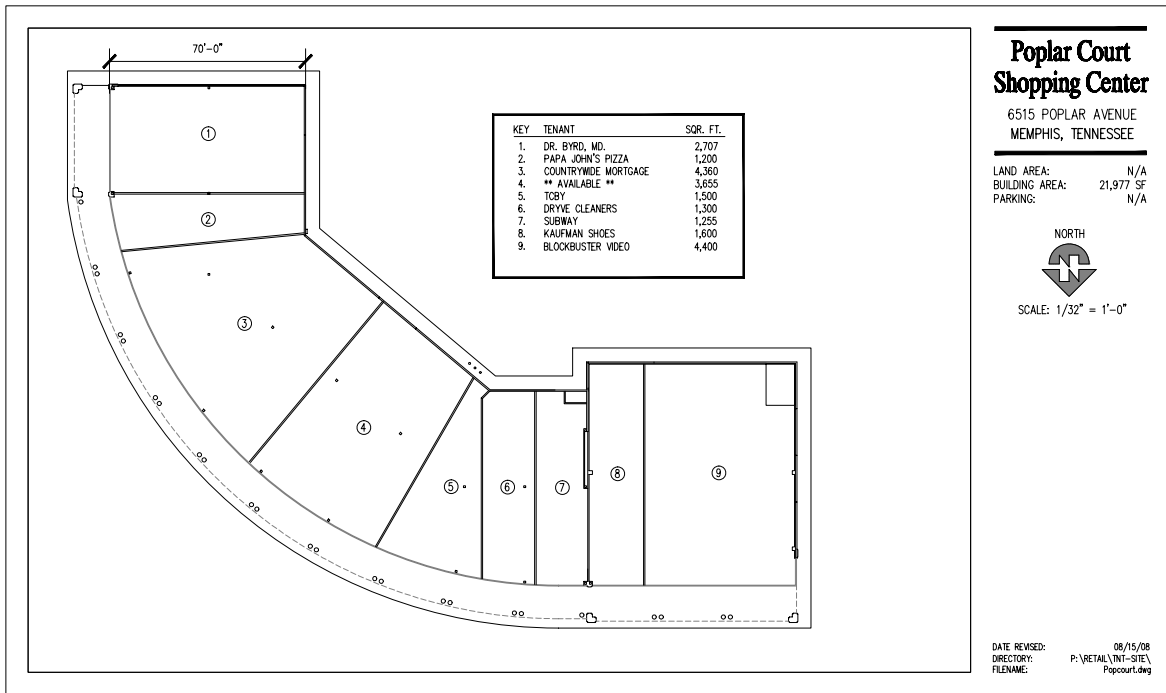
TRAFFIC COUNT:

Average Daily Count 54,341 cars/day

DEMOGRAPHICS:

	3 Mile	5 Mile
Population	64,797	219,526
Housholds	28,656	87,609
Average H.H. Income	\$85,385	\$78,427
Average Age	38	30





STONECREST
 Investments

For more information, contact: Jason Polley at 901-682-7373 - jdp@stonecrestinvestments.com
 5350 Poplar Avenue, Suite 312, Memphis, Tennessee 38119 - www.stonecrestinvestments.com